

How to enjoy OSAKA

www.howto-osaka.com

You can purchase special discount tickets for convenient access to Osaka and the Kansai region from Kansai-Airport on our website!

Example Use:

1 Before departure  
★ Access



Access to "How to Enjoy Osaka" by PC or smartphone!

2 ★ Easy Purchasing



Order!!  
Even from overseas you can purchase convenient tickets for access from Kansai International Airport to Osaka, Kyoto, Kobe, and Nara. Once your purchase is complete, please print out the voucher and bring it when you come to Japan.

3 Japan arrival  
★ Go to the ticket office



Take your voucher to the Nankai Kansai Airport Station Nankai ticket office.

4 ★ Exchange for your Tickets



Exchange your voucher for tickets at the ticket office counter.

5 ★ Let's enjoy travel



Now your fun travels in Japan begin! Please make lots of great memories.



The website features a wide array of useful information. Starting with information on how to access Kansai Airport, it also features detailed information on tourist spots, shopping, and the Osaka food scene. It also features not to be missed local secrets that can't be found in a guidebook. You can also stay up to date with the latest Osaka information while still overseas by visiting the Facebook page. We hope you visit Osaka soon!



The QR code below links directly to the site to purchase tickets:

OSAKA • MINAMI SIGHTSEEING GUIDE

# OSAKA TOURISM GUIDE

Wow!!

SNAP!



How to Enjoy Osaka → <http://www.howto-osaka.com>

Facebook → <https://www.facebook.com/osaka.nankai>

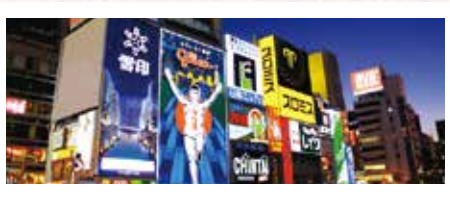
Nankai Electric Railway Co., Ltd.

# HOW TO ENJOY OSAKA

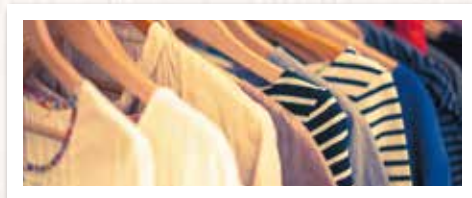
Delicious cuisines, warm people and lots of sightseeing facilities await you.



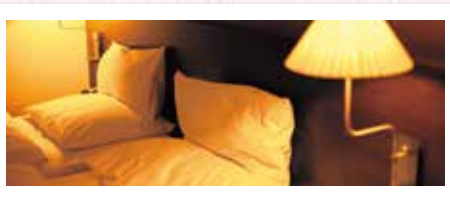
■ Enjoy the city known for “kuidaore”, eating until your wallet runs dry.



■ The Nankai Electric Railway is perfect for getting to all the sites there are to see in Osaka!



■ Shop duty free for smart savings.



■ Rest and relax at a hotel after you have had your fun for the day.

## Table of Contents

- 01 Welcome to Osaka!!
- 02 When you arrive at Kansai International Airport
- 04 Buying Tickets • Manners
- 05 How to get to Namba? Display • Train Type
- 06 Timetable
- 07 How to get to Kansai International Airport? Display • Train Type
- 08 Timetable
- 09 When you arrive at Namba Station
- 10 Discount tickets
- 11 Namba Area Map
- 13 NAMBA BEST WALK
- 15 Guide to Namba Station coin lockers
- 16 Getting to the shopping center from Namba Station
- 17 Let's go to Namba Parks!
- 24 Namba Parks! Guide to stores offering TAX-FREE shopping
- 26 Let's go to Namba CITY!
- 32 Namba CITY! Guide to stores offering TAX-FREE shopping
- 34 Access to sightseeing spots from Namba

## The Nankai train is a convenient and low-cost way out of the airport!

From Kansai Airport to the city of Osaka, take the Nankai Electric Railway...

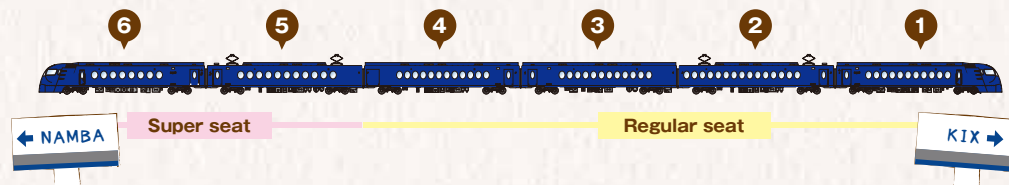


**The fastest!** As little as **38minutes** to Namba

**Low cost!** Fare of **920yen**  
Even the Limited express is **1,130yen** (lowest price)

**Convenient!** The Limited express and express both go directly to Namba!

## Limited Express Rapi:t in-car information



Super seat  
Three-row sheet Car no.5~Car no.6



Regular seat  
Four-row sheet Car no.1~Car no.4



**Discount tickets** let you ride from Kansai international Airport to Namba on the Limited express Rapi:t for just 920 yen standard fare (one way) + 210 yen.\*Check Page 10 for details



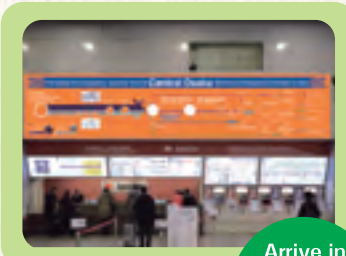
Kansai International Airport is the first place you arrive in Osaka.  
Here is how to access Osaka Namba from Kansai International Airport by train.

## Kansai-Airport Station

### Nankai Ticket Office

- Sales of regular tickets, reservation tickets and discount tickets
- Exchange of different vouchers
- Transportation guide for tourists

Business Hours 5:00 ~ 23:40  
(open throughout the year)



Arrive in Japan!  
Let's have a good time!

### Map of Kansai-Airport Station



### Ticket gate



Here starts your trip in Japan.

#### Legend

- Restroom
- Station office
- Currency exchange
- Ticket sales
- Limited express ticket sales
- Elevator to train platform
- Escalator

First buy a ticket when you get to the station.

At Kansai-Airport Station, ticket can be bought both at the ticket vending machine and at the ticket counter.

## Buying tickets (regular ticket)

1. Buy tickets before you board. Children's fares apply to children under 13. Exiting a station invalidates your ticket, whether you have reached your destination or not. Additional fares are required for reserved seats. You can buy limited-express tickets and reserved seat tickets at Nankai Ticket Office.

2. Buy tickets at the ticket vending machines.

**1** Insert money.  
The accepted denominations of coins or notes vary depending on the vending machine.

	¥ 1,000		¥ 10 ¥ 50
	¥ 5,000		¥ 100 ¥ 500
	¥ 10,000		coins

**2** If you buy more than one ticket at a time, press the button indicating the number of people.

**3** Press the button indicating the correct fare. For the airport, press the dedicated button. If you intend to transfer to another company's train, press the button indicating the station where you will be transferring first.

**4** Receive your tickets and change.

3. Go to the automatic ticket gates.  
Holders of white-backed tickets need to use the manned gates. Holders of Kansai Thru Pass can pass directly through the automatic ticket gates.

4. Check the platform number for your train on the signs in the station.

## Manners in stations and trains

1. No smoking in the station and the car.
2. Please set your cell phone in silent mode before boarding trains and refrain from talking on your phone. Doing so may cause problems with your fellow passengers. Please switch off your phone when you are near priority seats. Your phone may affect the operations of pacemakers and other medical devices. When traveling in trains with limited-express fees, please set your cell phone in silent mode before boarding and make calls on the vestibules on board the trains.

## Kansai-Airport Station Destination board display

After passing through the automatic tumstiles, check your train on the boards.

**NANKAI** 大阪なんば・和歌山市 (泉佐野乗り換え) 方面  
for OSAKA NAMBA • WAKAYAMASHI (Change at IZUMISANO)

09:33	1	ラピートβ なんば	Ltd.Exp.rapi:t-β for NAMBA
09:44	2	空港急行 なんば	Airport Exp. for NAMBA
09:56	1	普通 なんば	Local. for NAMBA

Departure time
Platform
Train type • Destination
Other information

## Know your Train types

Be sure not to mistake your train and platform.  
Rapi:t passengers will need to pay an additional limited express fee.

### Limited Express Rapi:t



About 38 minutes to Namba  
(Additional limited-express fee is needed.) See P10 for Money-saving Tickets.

### Airport Express



About 44 minutes to Namba  
(Passengers may board with just the standard fare)

### Local



You will arrive earlier if you change at the second stop Izumisano Station to Sub, Express or Express.

※Please be careful not to change the train at the second stop "Izumisano station" after 23:40



The local train will arrive at Platform 5 or 6 at Izumisano Station, so please transfer onto the sub-express or express train.



### Kansai-Airport Station Bound for Namba Timetable

Time	weekday				
5	45				
6	14	33	37	52	59
7	11	24	47	58	
8	1	20	27	35	43 54
9	3	14	27	33	44 56
10	5	12	26	35	39 56
11	5	10	26	35	39 56
12	5	9	26	35	39 56
13	5	9	26	35	39 56
14	5	9	26	35	39 56
15	5	9	26	35	39 56
16	5	9	26	35	39 56
17	5	13	23	35	39 59
18	5	14	18	36	44 55
19	5	14	21	36	43 54
20	5	14	26	36	43 55
21	6	14	28	35	44 54
22	1	13	26	35	41 48
23	5	29	40		

Time	Saturday, Sunday, holiday				
5	47				
6	13	35	48		
7	15	31	39	53	
8	4	21	35	41	53
9	5	14	35	44	57
10	5	11	26	35	38 56
11	5	10	26	35	39 56
12	5	9	26	35	39 56
13	5	9	26	35	39 56
14	5	9	26	35	39 56
15	5	9	26	35	41 56
16	5	9	26	35	39 56
17	5	8	29	35	38 56
18	4	8	26	34	39 56
19	4	8	26	34	38 56
20	4	9	24	34	37 56
21	4	9	27	34	39 56
22	5	7	23	31	36 53
23	12	29	40		

**NK32**  
Kansai Airport



**in red** Limited Express Rapi:t : Stops at Rinku-Town, Izumisano, Kishiwada, Sakai, Tengachaya, and Shin-Imamiya. All seats are reserved (additional limited express ticket is needed).  
※This train does not stop at Sakai and Kishiwada Stations after 20:00.

**in orange** Airport Express : Stops at Rinku-Town, Izumisano, Kaizuka, Kishiwada, Haruki, Izumiotsu, Hagoromo, Sakai, Tengachaya, and Shin-Imamiya.

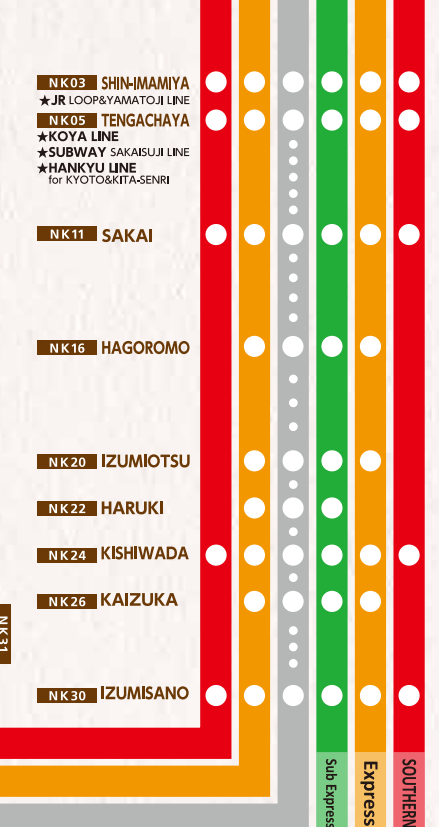
**in black** Local **Change** at the second stop Izumisano Station to Sub Express or Express.  
※Please be careful not to change the train at the second stop "Izumisano station" after 23:40

**NANKAI LINE**

**NK01**

# NAMBA

★SUBWAY  
MIDOSUJI, YOTSUBASHI & SENNICHIMAE LINE  
★KINTETSU LINE ★HANSHIN LINE



Time Table



## Namba Station Destination board display

After passing through the automatic turnstiles, check your train on the boards.



**南海線**  
NANKAI LINE



**空港線**  
AIRPORT LINE

10:059	ラピートβ 関西空港	Ltd.Exp.rapi:t-β for Kansai-Airport	
10:086	空港急行 関西空港	Airport Exp. for Kansai-Airport	

Departure time

Platform

Train type • Destination

Other information

## Know your Train types

Be sure not to mistake your train and platform.  
Rapi:t passengers will need to pay an additional limited express fee.

### Limited Express Rapi:t



About 38 minutes to Kansai-Airport (Additional limited-express fee is needed.) See P10 for Money-saving Tickets.

Guide to Namba Station platforms



Limited Express Rapi:t Platform 9

Guide to Limited express ticket counter



2F Central Gate

### Airport Express



About 44 minutes to Kansai-Airport (Passengers may board with just the standard fare)

Guide to Namba Station platforms



Airport Express Platform 5/6



3F North Gate

Namba Station Bound for Kansai Airport Timetable(Direct trains only)

Time	weekday				
5	15	28			
6	0	2	28	48	
7	0	10	30	39	52
8	0	2	18	30	32 47
9	0	15	30	40	
10	5	8	23	35	38 53
11	5	8	23	35	38 53
12	5	8	23	35	38 53
13	5	8	23	35	38 53
14	5	8	23	35	38 53
15	5	8	23	35	38 53
16	0	5	23	30	38 52
17	0	6	30	34	
18	0	12	30	42	
19	0	12	30	32	42
20	0	13	30	43	
21	0	13	30		
22	24	49			

Time	Saturday, Sunday, holiday				
5	10	30			
6	10	30	40		
7	0	15	30	40	55
8	0	10	30	40	
9	0	15	30	40	55
10	0	10	25	30	40 55
11	5	8	23	35	38 53
12	5	8	23	35	38 53
13	5	8	23	35	38 53
14	5	8	23	35	38 53
15	5	8	23	35	38 53
16	5	8	23	35	38 53
17	5	23	35	53	
18	5	25	35	53	
19	5	23	35	53	
20	5	23	35	53	
21	5	23	35		
22	0	20	31		



**in red** Limited Express Rapi:t : Stops at Shin-Imamiya, Tengachaya, Sakai, Kishiwada, Izumisano, and Rinku-Town. All seats are reserved (additional limited express ticket is needed)  
 ※(Train departures from Namba at 6:00, 7:00, 8:00, 9:00 on weekdays does not stop at Sakai and Kishiwada).

**in orange** Airport Express : Stops at Shin-Imamiya, Tengachaya, Sakai, Hagoromo, Izumiotsu, Haruki, Kishiwada, Kaizuka, Izumisano, and Rinku-Town.

Other information... There are also trains bound for Kansai Airport you can change at Izumisano station from Ltd. Exp. SOUTHERN, Sub Express, and Express.

## NANKAI LINE

NK01

# NAMBA

★SUBWAY  
MIDOSUJI, YOTSUBASHI&SENNICHIMAE LINE  
★KINTETSU LINE ★HANSHIN LINE

- NK03 SHIN-IMAMIYA  
★JR LOOP&YAMATOJI LINE
- NK05 TENGACHAYA  
★KOYA LINE  
★SUBWAY SAKAISUJI LINE  
★HANKYU LINE  
for KYOTO&KITA,SENRI
- NK11 SAKAI
- NK16 HAGOROMO
- NK20 IZUMIOTSU
- NK22 HARUKI
- NK24 KISHIWADA
- NK26 KAIZUKA
- NK30 IZUMISANO

RINKU-TOWN NK31



Time Table

Here we are! Let's enjoy shopping and gourmet! It is also convenient as a hub of transportation. Please come over here if you need any help.

## Namba Information Center



Tourist Information Center is located on the first floor of the huge open-air space Namba Galleria at Nankai Namba Station. It is a general tourist information center that can provide services in Chinese, English and Korean. The adjacent Travel Salon can also make train tickets, discount tickets and travel arrangements.

We also rent out mobile Wi-Fi routers.

**Business Hours** 9:00 ~ 20:00 **Holidays** Year-end and New Year holidays **Location** Namba Station 1F

## Currency Exchange

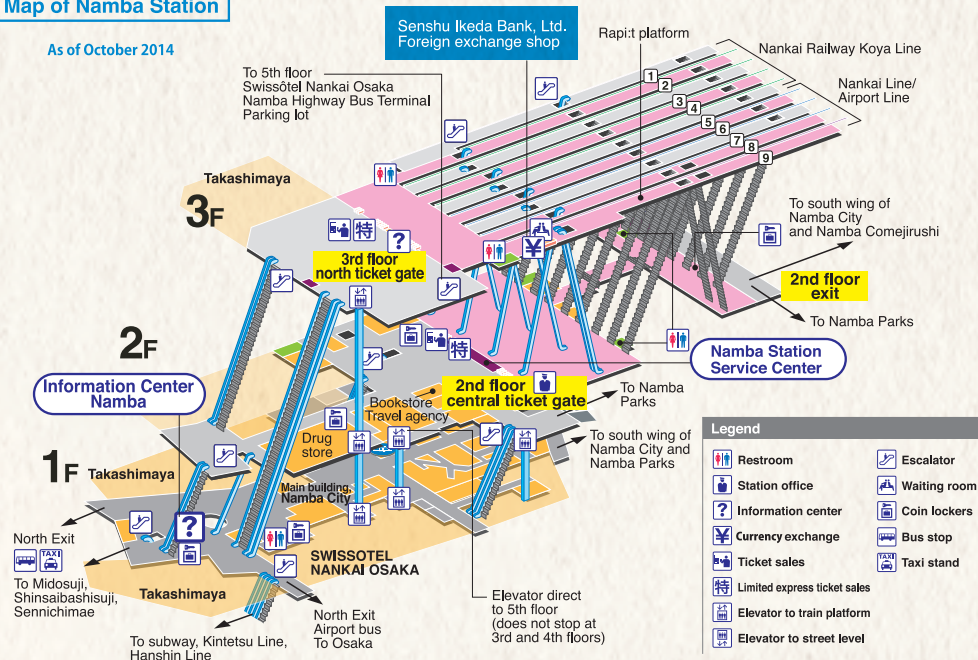


Ikeda Senshu Bank's foreign exchange counter is located on Platform 9. If you are outside of ticket gate and want to use the counter, ask the nearby station staff for help.

**Business Hours** 12:00 ~ 19:30 **Open throughout the year** **Location** Namba Station 3 F

## Map of Namba Station

As of October 2014



## Enjoy great value by taking the Nankai Electric Railway from Kansai Airport to Osaka City

### From Kansai Airport to Namba

You can board the Limited Express Rapi:t with just the standard fare of **920yen + 210yen!** (Regular seat, lowest price)

★When going from Kansai Airport to Osaka City, please use the following value tickets.★

### If you're going to Namba, this ticket is a great place to start!

- [Value Ticket] Rapid Express to Kansai Int'l Airport  
Rapid Express to Namba

One-way ticket Namba · Shin-Imamiya · Tengachaya · Sumiyoshitaisha · Sakai ~ Kansai-Airport Station



Rapi:t limited express ticket Namba · Shin-Imamiya · Tengachaya · Sumiyoshitaisha · Sakai ~ Kansai-Airport Station



Fare: [Regular seat] Adult :1,130 JPY, Child:570JPY

[Super seat] Adult :1,340 JPY Child:770JPY

Validity: Day of purchase only Purchas at: Namba(Namba Station Service Center·3F Ticket counter for express and reservation tickets,

Shin-Imamiya, Tengachaya, Sumiyoshitaisha, Sakai, Kansai-Airport

Passengers to stations in Osaka City such as Shin-Osaka,Shinsaibashi(Dotombori), Tennoji, Umeda, Nakatsu,Osaka Harbor, Nippombashi, Awaza, Tanimachi Yon-chome (Osaka Castle), and Esaka should purchase this ticket

- [Value Ticket] Kansai Int'l Airport to Osaka City Subway  
Osaka City Subway to Kansai Int'l Airport

Kansai-Airport Station - Namba Station



Osaka Municipal Subway All stations on Municipal Subway Lines and New Tram - Namba Station



Fare (One-way only): Adult 1,000JPY, Child 500JPY Validity: Day of purchase only

Purchas at: Ticket vending machines at any station of Osaka Municipal Subway and New Tram

Ticket vending machines at Kansai-Airport Station of the Nankai Electric Railway

※"Namba Station" is the only station for changing between Osaka Municipal Subway Line and Nankai

Electric Line. ※For those who ride from Sumiyoshitaisha Station, please change at Sakai Station to Ltd. Exp. Rapi:t.



## Fraser Residence Nankai Osaka

It has a good location with only a 2-minute walk to Namba Station! Guest rooms are over 28m<sup>2</sup>, with kitchen, dishes, washing and drying machine in all 114 guest rooms. WIFI environment is available everywhere inside hotel. Gym (open 24hours) and sauna are also available.



## Namba City Shopping center

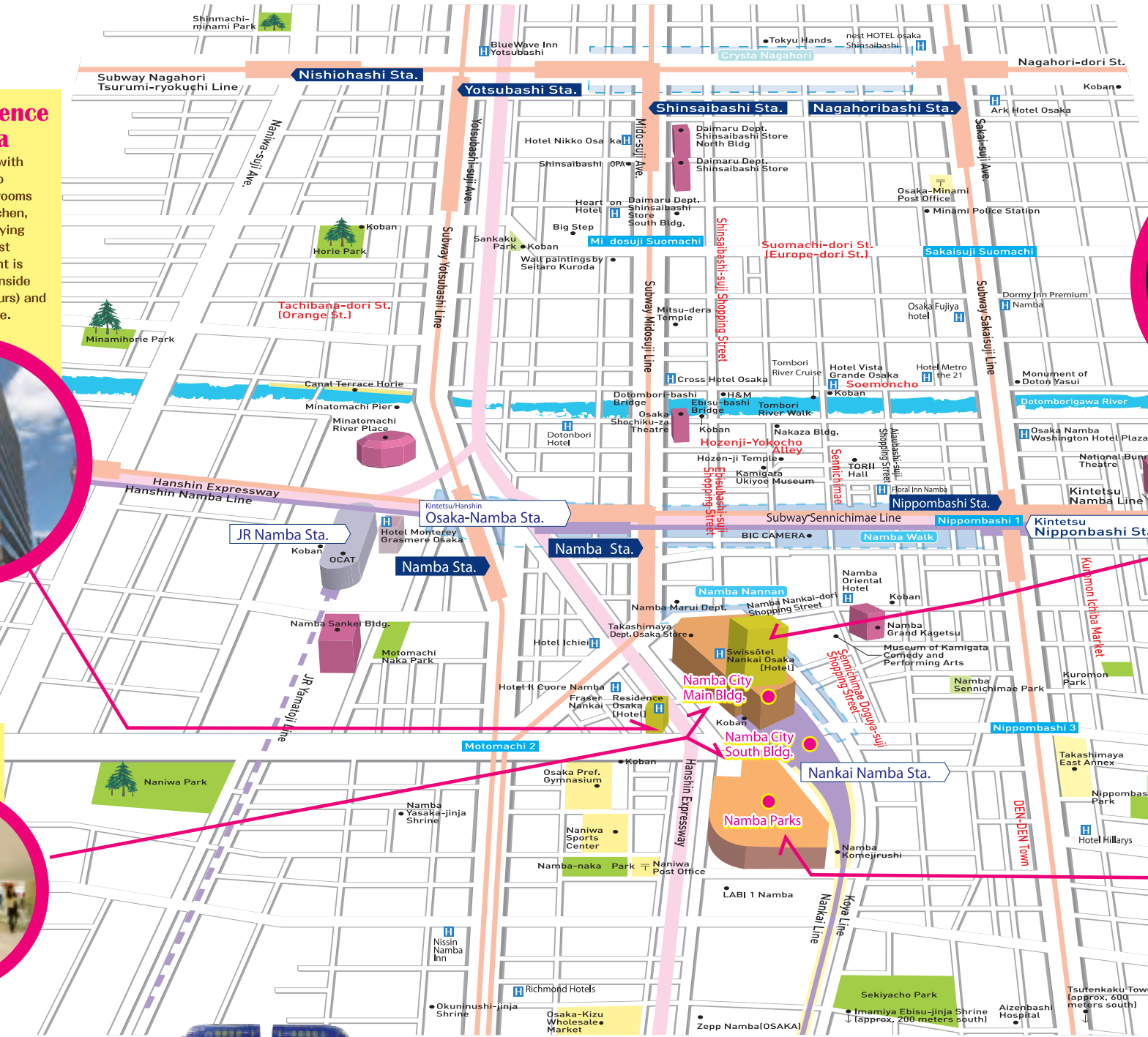


## Swissotel Nankai Osaka

The hotel sits above Nankai Namba Station. The 36-storey tower has 548 guestrooms, 6 restaurants, Sky Bar, spa, banquet facilities, etc.. From the room of hotel, a Namba landmark, you can enjoy the spectacular view of Osaka city.



## Namba Parks Shopping center



Introducing the places you must visit in Osaka.

Selects the spots, where you can walk around as popular and in the news.

These are the real places to know in Osaka for sightseeing gourmet and shopping. Let's go there!!



Famous as figure dolls.

# なんば BEST WALK

NAMBA

Colorful neon signs at night.

## When it comes to Osaka, This is the place!

The most famous sign in Japan. Pose with him.



## Dotombori

道頓堀



This is the place introduced in many guide books as "The Osaka". You should take pictures here when you come here. There are many restaurants famous for their Osaka foods around here. You can enjoy eating and shopping here.

Photo spots! Gulico • Cuidaore Taro • Kani doraku

### Do you wanna be an Otaku as well?

Nippombashi is called "denden-town" known as an electric town. If you want to buy electrical products, you must come here. Recently Nippombashi became the mecca for "otaku culture" and many people visit to experience new culture.

Recommended spots! maid café • costume shops • electric shops

### Fresh foods are gathered here!!

黒門市場

## Kuromon Ichiba

Kuromon Ichiba is the market street loved by the locals. There are about 180 shops with fish... restaurants, all of them bustling with people.



You can eat sushi with fresh fishes!!

From Dosuya-Suji About 5 mins



## Sennichimae D ogyuya-Suji shoppingstreet

千日前道具屋筋商店街

### Interested in unique tools!!

The street is crowded with many stores specializing in kitchen tools. You can buy high quality tools that professionals select. Shops that let you make food samples are especially popular among many visitors nowadays.



Find special souvenirs.



They seem real foods!!

## Hozenji Yokocho

法善寺横丁

### Osaka's heritage can still be felt.

Wish for my good trip.



Many Japanese lanterns!!

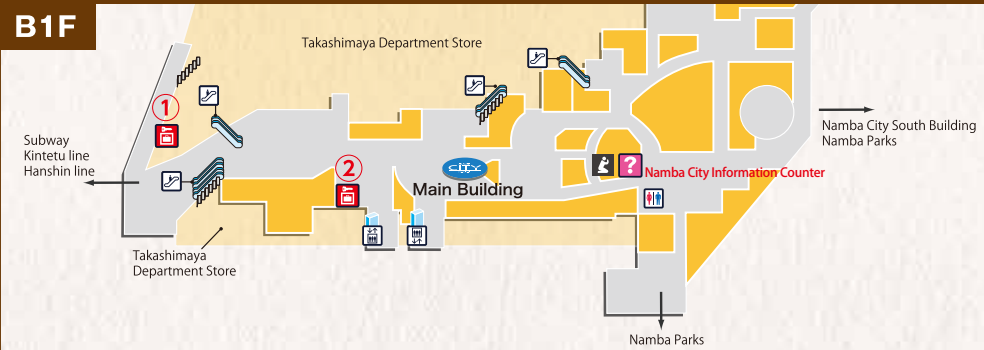
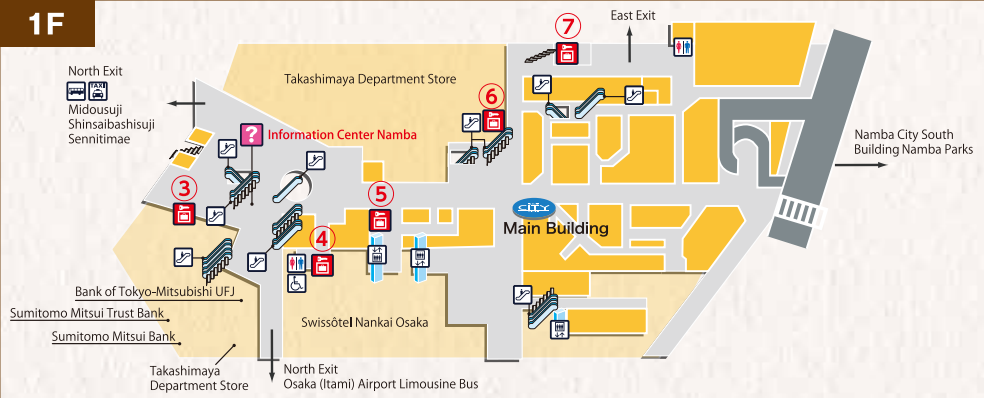
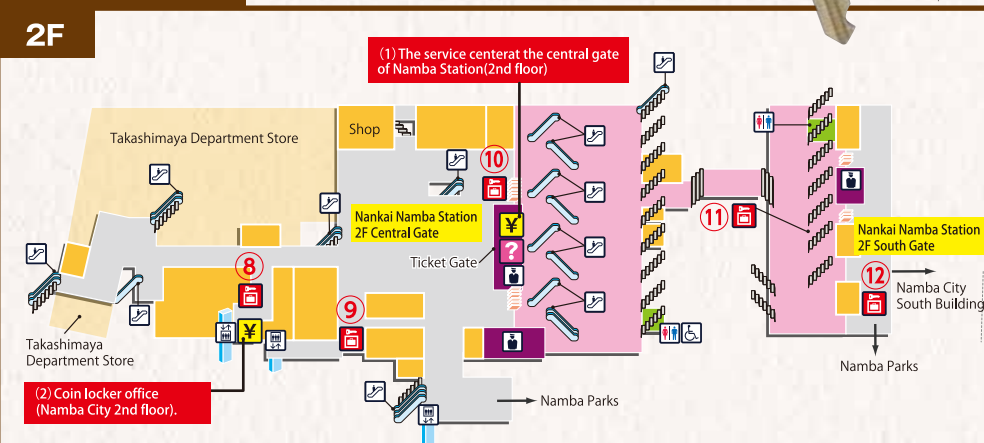
Before anyone knew it, lanes formed in front of the street stalls around the temple. The center of the city, the atmosphere here differs from other places in Namba.





At Namba Station, there are coin lockers capable of holding large suitcases, offering convenience and security.

## NAMBA CITY



For people going to Namba Parks/Namba CITY using the Nankai Electric Railway: exiting from Namba Station 2F Central Gate is the most convenient option.

START

① 2F Central Gate



Getting to Namba Parks from Namba Station 3F North Gate

② 3F North Gate

START



Exit the 3F North Gate and go down the stairs on the koya Line side to the 2F



Make a U-turn at the 2F and go straight toward Namba Parks



When you get to the 2F Central Gate, head to the right and go outside and the Parks connecting path will be there



Keep heading straight, and you'll arrive at the Namba Parks 2F entrance



# Get to Know that HOT SPOT

# Namba Parks!

Shopping Area...11:00~21:00 Restaurant Area...11:00~23:00 ※Excluding some stores Holiday: Not fixed  
 Namba Parks is a large shopping center directly connected to Nankai Namba Station. It is an eating, shopping and entertainment facility with a gently curving open-air mall and a lushly green terraced rooftop park where you can feel the charm of the city and rich nature at the same time. Renewed in March 2012, it provides a grand shopping experience for overseas tourists. Special offers are available for those with coupons.



You can get discounts and other benefits by presenting your coupons at each store.

## MOTHER FARM

マザー牧場



The milk sent straight from Mother Farm in Chiba prefecture has both the flavor and nutritional value of freshly-squeezed milk. The soft serve ice cream made using plentiful amounts of this fresh milk offers a rich taste you can't get anywhere else. Enjoy it with having it along with a drink.

Location: Namba Parks 5F

COU PON Caramel-nut Soft serve 10% OFF (¥400→¥360)

## cheepao maratan

七宝麻辣湯



Maratan is a bean-starch noodles soup where you can select what you want from an abundant variety of toppings, and choose a level of spiciness to make the most delicious soup for yourself, which has been a big hit in Shanghai and the rest of China. Please give it a taste.

Location: Namba Parks 6F

COU PON 1 free soup harusame topping

## SAIJIKI

菜蒔季



Saijiki's 5 concepts: ① We will use carefully selected seasonal vegetables so that customers can feel the flavors contained in the ingredients. ② We will also use nutrient-rich "whole foods" in our cooking, made from whole vegetables. ③ We will make every effort to cook without using flavoring chemicals or artificial additives. ④ We will prepare most dishes within the restaurant, and serve freshly made cuisine. ⑤ We will cook using plenty of fresh vegetables of all varieties.

Location: Namba Parks 6F

COU PON \*10% off the cost of the meal \*Free guide for groups of 10 or more

## MAN

鹿児島産黒豚しゃぶしゃぶ本舗 まん



Shabu shabu with Kagoshima Kurobuta in dashitsuyu from a traditional secret recipe. Go ahead and enjoy the flavors of Kyushu in their original form with dishes like Kyushu Hyakubi Nabe, famous Kumamoto horse sashimi, and locally raised Miyazaki roast chicken, along with a free selection of tare sauces and seasonings.

Location: Namba Parks 7F

COU PON 10% OFF

## NIKUDOKORO KURA

肉処 倉



At our restaurant, we offer mostly Minami-kyushu high-quality Japanese beef under our motto of safety and trust. Enjoy a special time with people important to you, and take home a wonderful memory.

Location: Namba Parks 7F

COU PON 1 free glass of a drink (alcoholic beverages/soft drinks)

## LUXIOUS

ラグシャス



This is an all-you-can-eat restaurant where you can have your fill from a combination of over 100 types of Japanese and Western cuisine. There is also an abundant variety of drinks including coffees and juices. There is a 90 minute time limit. The food include fish, meat, and seasonal vegetable dishes for meals to suit the current season, so be sure to drop in.

Location: Namba Parks 7F

COU PON 10% OFF the cost of your meal (Up to ¥3,000)

## WASYOKUYA ANBAI

和食や あんばい



Enjoy the Japanese cuisine we've created and which could only come from Anbai. We have all sorts of dishes, including tempura, sukiyaki, shabu shabu, sushi, and both course and a la carte selections.

Location: Location:Namba Parks 7F

COU PON 1 free drink

## PORCO

ポルコ



Each pancake is made 1 by 1 after they are ordered. Enjoy a hot and fluffy, freshly made pancake. In addition to dessert dishes, we also have a number of meal-oriented pancake options.

Location: Namba Parks 8F

COU PON 10% OFF

## LUSCIOUS

ラシャス



Welcome to "Luscious", a store specializing in men's underwear. Offering a range of sizes, materials, and styles, we're sure you'll find that "special pair."

Location: Namba Parks 1F

COU PON Customers who purchase BETONES underwear will receive a BETONES original sticker. While supplies last.

**SHIPS**

シップス



With the "STYLISH STANDARD" as our concept, expressing traditional elements in a modern form, we are a select shop with the "genuine article", which perceives the true nature of standards, beginning with items selected carefully using a global perspective.

Location: Namba Parks 2F

**fredy&GLOSTER**

フレディ&グロスター



Original brand daily-wear for both men and women, and select items from Japan and abroad make up our lineup. Come and enjoy a relaxing shopping experience in our wide open shop.

Location: Namba Parks 2F

**Manhattan Portage NAMBA**

マンハッタン ポーテージ ナンパ



A specialty store for American bag brand Manhattan Portage. Our appealing premier Osaka lineup includes authentic messenger bags, day bags, and tote bags, as well as special items you can only find at directly operated stores and more.

Location: Location:Namba Parks 2F

COU PON Not-for-sale novelty gift

**TSUMORI CHISATO**

ツモリチサト



TSUMORI CHISATO is a brand which takes the interests and likes of designer Tsumori Chisato and expresses them in a out of the box, honest way. It provides a girly, sexy, happy style full of adult fantasy, happy style. Namba Parks stores carry both women's and men's items.

Location: Namba Parks 3F

**Odette e Odile UNITED ARROWS**

オデット エオディール ユナイテッドアローズ



This shop provides a wide range of goods, including original shoes, and select fashion items from Japan and abroad. With everything from trendy items to more basic ones, we cater to ladies who treasure each day, scene-by-scene. We strive to provide a style overflowing with feminine qualities in the hopes that adult women will continue to shine no matter their age.

Location: Namba Parks 3F

**EXPRIMER**

エクスプリメ



EXPRIMER is a shop offering accessories and bags, most of them handmade in Japan. Accessories with cotton pearls made using paper are our top recommendation. They are light as feathers, so be sure to check them out.

Location: Namba Parks 3F

COU PON Accessories 10% OFF

**luna-di-miele**

ルナディミエーレ



luna-di-miele is Italian for Honeymoon. It stands for the "happy marriage of two lovers." With mystique and the deep, soft shine of the moon as a theme, we offer a lineup ranging from bridal jewelry to jewelry which can be worn day to day.

Location: Namba Parks 2F

COU PON 10% OFF

**NORDIC Feeling by Junks**

ノルディック フィーリング バイジャンクス



Offering a lineup full of CASIO brand items such as G-SHOCK and Baby-G!! We also offer other popular Japanese brands such as ISSEY MIYAKE and SEIKO as well as fashionable Western brands to offer a wide variety, so please come by.

Location: Namba Parks 2F

COU PON Customers who spend over ¥10,000 (before tax) will receive an original CASIO novelty present. While supplies last.

**Kutsushitaya**

靴下屋



Providing comfortable socks that you will want to wear day after day. This store puts out "second skin" socks that gently encase your precious feet in such a way that you will forget you are even wearing them, all "Made in Japan".

Location: Namba Parks 3F

COU PON Giving out novelty shoe tree for a limited time.

**MINNETONKA STORE**

ミネトンカ ストア



Minnetonka has fans worldwide. Perhaps you have something in your wardrobe too. Why not drop in to Minnetonka Namba Parks and find that perfect pair from our rich lineup?

Location: Namba Parks 3F

**Ain Soph**

アインソフ

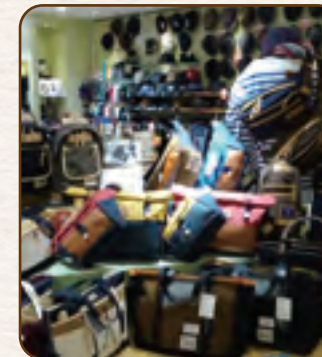


Ain Soph fuses Japanese "wabi-sabi" with European-style beauty, expressing the worldview of Ain Soph through a theme of "only one, like no other, forever." Our items, selected from many preferences and made by skilled craftsmen, are all masterpieces which give off more personality the more they are used.

Location: Namba Parks 4F

**GLOCCA by COLLECTORS**

グロッカバイコレクターズ



A men's fashion store focused on bags, wallets, and hats. The store features an impressive collection of MSPC (Master - Piece) bags which are popular with our customers from overseas. We look forward to serving customers looking for Master - Piece's "Made in Japan" quality.

Location: Namba Parks 4F

COU PON Receive a key-ring featuring the "Master - Piece" logo with any purchase of a "Master - Piece" bag of ¥20,000 or more (while supplies last).

**GUESS**

ゲス



GUESS, the L.A.-based lifestyle brand now open in Namba Parks!! From men's and women's clothing to watches, bags, and jewelry, we have a full lineup of sexy and timeless GUESS items.

Location: Namba Parks 4F

**FRANKLIN & MARSHALL OSAKA**

フランクリン & マーシャル オオサカ



Founded in Verona, Italy, in 1990. This is an apparel brand which takes the ideas of sporty, college, and vintage, for an American College style as seen through Italian eyes.

Location: Namba Parks 4F

COU All customers who make purchases will receive  
PON an original sticker present. While supplies last.

**TiC TAC**

チックタック



TiC TAC is a select watch shop based on a concept of enjoying watches. Carrying SEIKO, CITIZEN, G-SHOCK, and Japan-only limited items, we have a rich selection of items.

Location: Namba Parks 4F

**THE SUPER SPORTS XEBIO**

スーパースポーツ セビオ

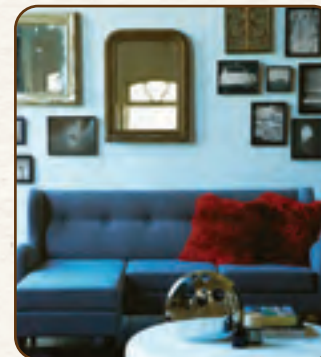


Super Sports XEBIO is a general sports shop with team sports items for soccer, basketball, etc, as well as items for running, yoga, and fitness. In addition to the golf shop "Victoria Golf" and outdoor specialty shop "L-Breath" all combined into one.

Location: Namba Parks 4F

**Francfranc**

フランフラン



Bringing a "fun lifestyle" to the casual everyday. Francfranc is an interior furnishings shop which helps create spaces to color your daily life in abundance and positivity. Providing a comfortable lifestyle with fashionable interior goods and furniture which come to life through various coordination.

Location: Namba Parks 5F

**P2**

ピーツー



A pet shop with a rich variety of items and food for different types of pets. Our customers love our made-in-Japan dog and cat food and treats with carefully selected ingredients and no additives are popular. Great for gifts for pet lovers. We are looking forward to your visit. We carry items and food for cats, birds, small animals, tropical fish, and goldfish.

Location: Namba Parks 5F

COU Foreign customers who bring this pamphlet  
PON will receive 5% OFF purchases over ¥3,240.

**FOSSIL**

フォッシル



FOSSIL is a brand founded in 1984 in the US. Providing an abundance of watches and leather accessories inspired from mid-century fashion and 50's design, as well as easy to coordinate bags and jewelry.

Location: Namba Parks 4F

COU 10% OFF your total (sale items and repair costs  
PON excluded)

**Nudie Jeans**

ヌーディー ジーンズ



Nudie Jeans started in Goteborg, Sweden in 2001, putting out a collection which linked music and people to daily life. In recent years efforts are being focused on using 100% organic cotton, giving consideration to the environment, performing environmental activities, and putting out environmental products. This a brand which puts importance in the "second skin" feeling, and has a continued passion for denim.

Location: Namba Parks 4F

COU Customers who purchase denim will receive a Nudie  
PON Jeans original sticker present. While supplies last.

**Just Cavalli**

ジャスト カヴァリ



Following in the tradition of Roberto Cavalli, this is a second lineup with a free spirit targeted towards the new generation. It has received favorable ratings in the international fashion scene, setting the ground-level for the collection.

Location: Namba Parks 4F

COU Customers who spend over ¥30,000 will receive  
PON an original logo cap present. While supplies last.

**phiten**

ファイテン



Through Phiten's unique processing we help to bring out the true power that humans hold, maintain the best mind and body balance, and support good health.

Location: Namba Parks 5F

**Lulu Plus Plus**

ルル・プラス プラス



Selling bags made with Japanese Kurashiki Hanpu canvas. Our chief characteristic is the original striped color used in the bags and leather products. Why not use it as your fashion point?

Location: Namba Parks 5F

COU Customers who spend over ¥5,000 will receive  
PON a book cover present.

**Nakagawa Masashichi Shoten**

中川政七商店



We have a wide variety of useful and attractive "tools for life" for the house and daily life, made with an eye for quality and selectiveness. We embrace the idea, and having the idea of creating new things using the lessons of the old at our core - an idea that a trusted shop with a 300 year history in Nara is well-suited for. We have many excellent and useful items from all over Japan, centered around the "Nakagawa Masashichi Shoten" original goods full of natural materials like hemp, silk, and wood.

Location: Namba Parks 5F

**Lulu cosme**

ルル・コスメ



We provide a selection of products such as Kumano makeup brushes, olive cosmetics and other items born from techniques and materials cultivated from the traditional industries of the various regions of Japan. With our concept of providing the "good items of Japan" with easy accessibility, we provide items to make your heart and body beautiful.

Location: Namba Parks 5F

**COUPON** Customers who spend over ¥3,000 will receive a novelty present (item subject to change depending on period of time).

**Nuts DOM**

ナッツダム



A new specialty shop born from a nuts shop with a 109 year history. Offers over 50 different items including snacks made with healthy beans, wasabi flavored nuts, in handy sizes and at affordable prices. Perfect for small souvenirs or presents.

Location: Namba Parks 5F

**COUPON** Customers who spend over ¥1,000 will receive 1 pack of our popular "Wasabi Peanuts" (S size).

**kagurazaka Cosmetics makanai**

神楽坂まかないコスメ



A popular hand cream shop from Kagurazaka Tokyo gaining notice as a "store where women with beautiful hands gather." This shop is the only direct retailer in Kansai and carries a range of exquisite hand creams to bring out the beauty of your hands.

Location: Namba Parks 5F

**COUPON** Customers who make a purchase will receive an "exquisite hand cream and cleansing" sample set present.

**Churari**

ちゅらり



With a shop created in the image of Okinawa's blue sea and white beaches, we carry a wide variety of Okinawan snacks, food items, decorations of the ward Shisa, and other items perfect for souvenirs. Come and try Blue Seal ice cream, popular in Okinawa, at the eat-in corner.

Location: Namba Parks 5F

**COUPON** Eat-in dessert menu 10% OFF

**lori**

伊織



lori is a towel specialty shop which pursues the possibilities of towels, from select daily items to lifestyle goods which will bring about a rich daily life. Be sure to check out our products which make everyday fun and that can only be found at "lori."

Location: Namba Parks 5F

**COUPON** 5% OFF

**NAMCO**

ナムコ



A full array of popular games! This is a recreational area you can easily enjoy by yourself or with a group. We have an assortment of games including prize games, racing games, sticker machines and more. We look forward to your visit.

Location: Namba Parks 6F

**COUPON** ¥100 off sticker machine (purikura) with presentation of Osaka Tourism instruction. (From ¥400 to ¥300)

Customers from overseas who present their passports can make tax-free purchases at 89 stores including the above. As of September 24th 2014

**TAX FREE**



↑ this simbol is the mark



**NAMBA PARKS GIRL**

1F	RAGTAG	Men's, Ladies' & Kids' Fashion
1F	STUSSY	Men's, Kids' Fashion
2F	SHIPS	Men's, Ladies' Fashion
2F	GALLARDAGALANTE	Ladies' Fashion
2F	HYSTERIC GLAMOUR	Men's, Ladies' & Kids' Fashion
2F	AMERICAN RAG CIE	Men's, Ladies' Fashion, Interior Goods
2F	goldie H. P. FRANCE	Accessory, Bags, Dressing Goods
2F	NOLLEY'S	Ladies' Fashion
2F	UNITED ARROWS	Men's, Ladies' Fashion
2F	Le Dome EDIFICE et IENA	Men's, Ladies' Fashion
2F	LE CIEL BLEU	Ladies' Fashion
2F	H. P. FRANCE exclusive	Ladies' Fashion
2F	NIWAKA	Jewelry
2F	PLAY COMME des GARCONS	Men's, Ladies' & Kids' Fashion, Dressing Goods
2F	IL BISONTE	Leather Goods, Dressing Goods, Bags
2F	A. P. C.	Men's, Ladies' Fashion
2F	COMME des GARCONS COMME des GARCONS	Ladies' Fashion
2F	GRACE CONTINENTAL	Ladies' Fashion
2F	Tiara	Ladies' Fashion
2F	UNITED ARROWS green label relaxing	Men's, Ladies' & Kids' Fashion
2F	fredy & GLOSTER	Men's, Ladies' Fashion
2F	URBAN RESEARCH DOORS	Men's, Ladies' & Kids' Fashion, Dressing Goods
2F	graniph	Men's, Ladies' Fashion
2F	NORDIC Feeling by Junks	Watch
2F	Sharing Room Heather / RAGEBLUE	Men's, Ladies' Fashion
3F	marimekko	Men's, Ladies' & Kids' Fashion, Dressing Goods, Life miscellaneous Goods
3F	Kutsushitaya	Socks
3F	un dix cors	Ladies' Fashion
3F	HITMAN & Co.	Shoes, Ladies' Fashion
3F	CABANE de ZUCCA	Men's, Ladies' Fashion, Dressing Goods

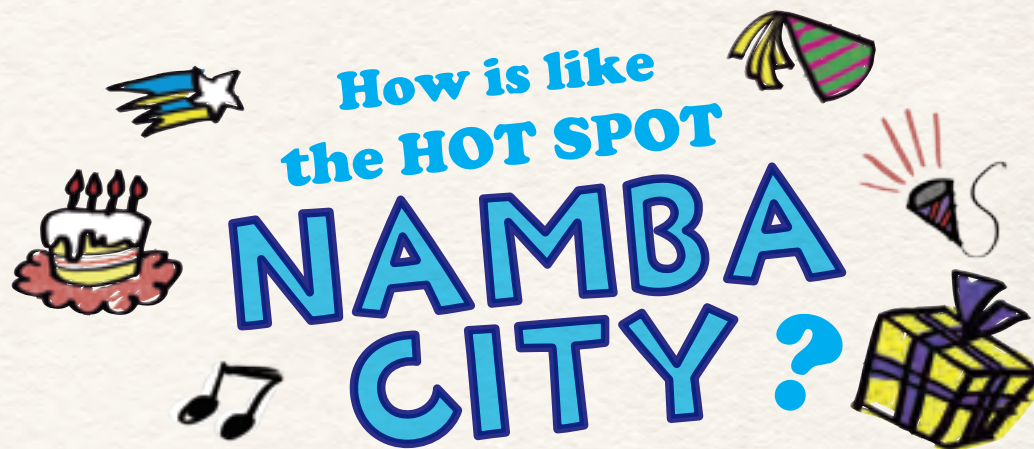


3F	TSUMORI CHISATO	Men's, Ladies' Fashion, Dressing Goods
3F	Odette e Odile UNITED ARROWS	Shoes, Bags
3F	BAG' n 'NOUN	Bags
3F	Perle Peche	Ladies' Fashion
3F	ete	Accessory
3F	Ane mone	Accessory, Dressing Goods
3F	REAC	Ladies' Fashion
3F	heliopole	Men's, Ladies' Fashion, Dressing Goods
3F	MINNETONKA STORE	Shoes, Dressing Goods
3F	SIXTY ONE ARROW	Men's, Ladies' Fashion, Dressing Goods
3F	Bshop	Men's, Ladies' Fashion, Shoes, Life miscellaneous Goods
3F	COMME CA STYLE	Men's, Ladies' & Kids' Fashion
3F	LACOSTE	Men's, Ladies' Fashion
3F	TRECENTI	Jewelry
4F	Ain Soph	Bags, Leather Goods
4F	RAWLIFE	Men's, Ladies' Fashion
4F	niko and...	Men's, Ladies' Fashion, Dressing Goods, Interior Goods
4F	GLOCCA by COLLECTORS	Men's Dressing Goods
4F	KURACHIKA	Bags
4F	SHIPS JET BLUE	Men's Fashion
4F	Johnbull Private labo	Men's, Ladies' Fashion
4F	adidas Originals Shop	Men's, Ladies' Fashion, Shoes
4F	DIESEL	Men's, Ladies' Fashion
4F	GUESS	Men's, Ladies' Fashion, Dressing Goods
4F	POKER FACE	Eyewear
4F	LUCIUS	Sunglasses
4F	TIC TAC	Watch
4F	AVIREX	Men's, Ladies' & Kids' Fashion
4F	STUSSY WOMEN OSAKA	Ladies' Fashion, Interior Goods
4F	SETTING CRACKS	Men's Fashion
4F	BEAVER	Men's, Ladies' Fashion, Dressing Goods
4F	ice-watch	Watch
4F	FOSSIL	Dressing Goods, Bags, Watch
4F	ARMANI JEANS	Men's & Ladies' Fashion, Dressing Goods
4F	G-STAR RAW	Men's & Ladies' Fashion, Dressing Goods
4F	THE SUPER SPORTS XEBIO	Sports, Golf, Outdoor
4F	RC RED CARPET	Men's & Ladies' Fashion, Dressing Goods
5F	grüßen	Kitchen Goods, Interior Goods
5F	phiten	Cosmetics, Health food supplement, Goods
5F	DOUBLEDAY	Furniture, Interior Goods, Ladies' Fashion
5F	andon	CD, Goods
5F	LuLu Plus Plus	Canvas Goods, Bags, Leather Goods
5F	kagurazaka Cosmetics makanai	Cosmetics, Japanese Goods
5F	Nakagawa Masashichi Shoten	Life miscellaneous Goods
5F	LE CREUSET	Pan, Pot, Kitchen Appliance
5F	Books&Culture KuLaSu season	Books, Goods, Dressing Goods, Culture, Cafe

**Conditions for tax-free shopping: You must present your passport when making a purchase.**

(1) Consumables (foods, drinks, medicines, cosmetics, etc.) must be purchased at the same store on the same day, and the total spending must be over 5,000yen but no greater than 500,000yen.

(2) General goods (electric appliances, clothing, accessories, etc.) EXCEPT FOR consumables are exempt from consumption tax if purchased at the same store on the same day, and the total spending must be over 10,000yen.



- Shopping street...10:00 ~ 21:00
  - Restaurant street...10:00 ~ 22:00 (※Excluding some stores) ● Holiday: Not fixed
- Namba CITY, stretching under Nankai Namba Station and its north and south elevated railroad tracks, is an enjoyable shopping street for three generations of grandparents, parents and children. There are many fashion, cosmetics and variety stores in the Main Building and popular restaurants in the South Building. After it reopened following renewal in 2011, it became more and more convenient with the multi-language guide inside the buildings. Special offer is available for those who have the coupon.



You can get discounts and other benefits by just showing it to each store.

**KOTAN RA-MEN**

古潭老麵



A long established ramen chain founded in 1968, we have been long loved by the people of our native Osaka. The pork and chicken broth soups are slowly stewed at the shop every morning and are full of collagen. Delicious and healthy, we have earned the support of old and young, men and women alike.

Location:Namba CITY Main Building B2F

COU PON 10% OFF

**TONKATSU KYK**

とんかつKYK



As a port cutlet specialty restaurant, KYK brings service with heart and flavor. (We're a pork cutlet specialty restaurant). We take special care with all of our ingredients, including pork, flour, and sauces. Free extra helpings of rice, miso soup, and salad. Relax and enjoy our crispy, juicy KYK pork cutlets.

Location: Namba CITY Main Building B1F

COU PON 10% discount on food and drink

**Starbucks Coffee**

スターバックス コーヒー



A specialty coffee store born in Seattle, USA. With our espresso, made from high-quality Arabica coffee beans, we offer not only a wide variety of espresso drinks, but also pastries and sandwiches.

Location: Namba CITY Main Building B1F

## Tenka-no Daidokoro DAIKI SUISAN

天下の台所 大起水産



We prepare exceptionally fresh fish which arrives every morning in a simple way so as to preserve the fish's flavor in sushi, sashimi, tempura, yogan-yaki and other various dishes.

Location:Namba CITY Main Building 1F

COU PON 10% OFF the cost of your meal

## KOMEDA COFFEE

コメダ珈琲店



When you mention Komeda, "Shironoir" is what comes to mind as it grows more and more recognizable nationwide. Shironoir gets more orders than anything else on the dessert menu, and is the most perennially popular item on the entire menu.

Location:Namba CITY Main Building 1F

## shakers cafe lounge+

シェーカーズ カフェ ラウンジ プラス



Settle down and relax in this trendy designer space. We offer cakes that change every season, original drinks, cute latte art and lots more. For lunch we have meat, hors d'oeuvres, and quiches. Come enjoy shakers' assortment of careful selections.

Location:Namba CITY Main Building 1F

## Kirin City

キリンシティ



Kirin City's specialty is its 3-stage poured beer, in the German tradition. Soft foam encloses the beer's original flavor, delicious to the last drop. Another great choice is our frozen beer! Over the beer, we place sherbert-like frozen beer. Come give our beers a try and enjoy a new drinking experience!

Location: Namba CITY South Building 1F

## ABENO TAKOYAKI Yamachan

あべの たこやき やまちゃん



Takoyaki, a local food loved in Osaka since old times. Even among takoyaki types, Yama-chan is well-loved within downtown Tennoji (Abeno), with its crispy outside and creamy inside. Come give it a try!

Location: Namba CITY South Building 1F

COU PON An extra takoyaki for each one-person portion (8, 10, or 12)

## AMATO MAEDA

甘党まえだ



Thanks to great time and effort, our Mitarashi dango has become our most popular item. If you wish to enjoy Japanese confections, we here at Amato Maeda are confident in our excellent service. Naturally, we also offer take-out for dango and ohagi.

Location: Namba CITY South Building 1F

COU PON Customers spending over 500 yen on food and beverages in the restaurant will receive 1 free Mitarashi dango

## YAKINIKU GYUTA

焼肉 牛太



We are a new all-you-can-eat yakiniku restaurant! We have a 114 item menu including beef tongue, rib meat, skirt steak, reimen and more as well as over 50 types of drinks!! We have 120 minute courses with women starting at ¥2,780 and men at ¥2,980. Add all-you-can-drink for an extra ¥1,000!!!

Location:Namba CITY Main Building 1F

COU PON Free all-you-can-drink soft drinks (Coca Cola, ginger ale, Capri, orange juice, colong tea only) Normally ¥400 → FREE

## TAJIMAYA

但馬屋



A self-service, all-you-can-eat shabu shabu and sukiyaki restaurant. Customers can choose from foreign, domestic. Pork, chicken, vegetables, udon, rice, and ice cream are also all-you-can-eat.

Location:Namba CITY Main Building 1F

COU PON Free use of the soft drink bar

## SHABUNABE UDON NORAYA

しゃぶ鍋うどん のらや



Please come for a relaxing time enjoying the various food served in lovely dishes in the motif of cat's shape and face.

Location: Namba CITY South Building 1F

COU PON 100yen discount for each person

## ils

イル



A leather shop that selects the right thing, foreign or domestic, for a person using everything from leather goods (small items, bags) to fashionable items to products for daily life.

Location: Namba CITY Main Building B2F (CITY MEN'S)

## ABC-MART

ABC-MART



A shoe store which provides lifestyles from the feet up, offering sneakers, boots, pumps and other women's shoes as well as business shoes, from makers like Nike, adidas, Vans and more.

Location: Namba CITY Main Building B2F

## BEAUTY & YOUTH UNITED ARROWS

ビューティー&ユース ユナイテッドアローズ



BBEAUTY&YOUTH has a free imagination, a sense of playfulness, and a relaxed attitude, and it retains its inquisitive curiosity. It is a "FREEDOM" mentality. BEAUTY&YOUTH has class, purity, a sense of security, health, and traditional values. It is a "STANDARD" mentality. With these unchanging mentalities, BEAUTY&YOUTH will continue to express its values with a theme based on sensitivity that never loses its flexibility and shining spirituality.

Location: Namba CITY Main Building B1F

**PLAZA**

ブラザ



An import variety store for daily life quickly bringing you select items from all over the world. A wide variety of items to make each day enjoyable and comfortable are available, including cosmetics/makeup goods, confections, stationery, character goods, and apparel.

Location: Namba CITY Main Building B1F

COU PON 8% discount

**FANCL**

ファンケル



Varieties of safe non-addictive cosmetics and high quality supplements at low price are offered in the store. Services are also enhanced with the counseling corner where you can check your skin and the free makeover counter.

Location: Namba CITY Main Building B1F

COU PON Sample present for the customers who buy skin care items

**MISUGI**

美スギ



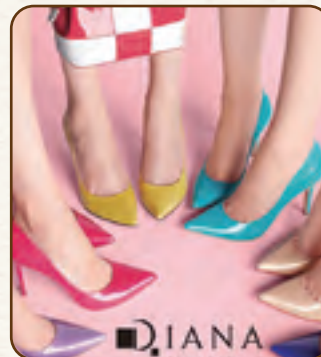
A cosmetics specialty shop featuring mainly goods from the 5 major domestic companies (Shiseido, Kanebo, Kose, Sofina, and Max Factor).

Location: Namba CITY Main Building B1F

COU PON Customers who purchase a product will receive a free sample

**DIANA**

ダイアナ



With modern sensitivity and refined feeling, "Diana", a brand for today's women on the up and up, offers original shoes and bags created with fashion based on elegance.

Location: Namba CITY Main Building 1F

**ANTEPRIMA/MISTO**

アンテプリマ/ミスト

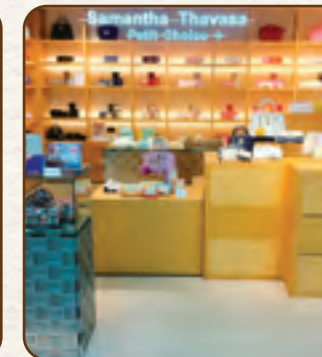


Meaning "Mixed" in Italian. ANTEPRIMA/MISTO presents collection of fresh, fun and fabulous accessories. Playfully designed and beautifully created for the young and the eternally young at heart. With an eclectic of handbags, charms, wallets, fashion jewelry and more, ANTEPRIMA/MISTO embraces a wide array of outstanding design.

Location: Namba CITY Main Building 1F

**Samantha Thavasa Petit Choice +**

サマンサタバサプチチョイスプラス



A shop carrying Samantha Thavasa bags and Samantha Thavasa Petit Choice wallets. We carry many multicolor series and leather items.

Location: Namba CITY Main Building 2F

**ORBIS THE SHOP**

オルビス・ザ・ショップ



Orbins, popular for its skin-friendly, 100% oil-cutting skin care. We offer a wide variety of items created with special attention to high safety and quality, featuring characteristics such as no oils, no aroma additives, no color additives, and full allergy testing. We have plenty of products and health products available, from makeup goods to items for particular issues.

Location: Namba CITY Main Building B1F

**KATE SPADE SATURDAY**

ケイト・スペード・サタデー



KATE SPADE SATURDAY is a new global lifestyle brand based on the concept of "bringing the excitement of Saturday to everyday." Colorful, optimistic and bold... KATE SPADE SATURDAY comes from the same brand DNA as kate spade newyork but expresses it in a more casual way.

Location: Namba CITY Main Building B1F

COU PON Original tattoo sticker gift (while supplies last).

**STRAWBERRY-FIELDS**

ストロベリーフィールズ



Strawberry Fields provides collections imagined around active scenes in real life, rooted in a concept of "outfitting with character". We give pure and intelligent modern women who shine each day femininity and elegance that will last forever.

Location: Namba CITY Main Building 1F

**KoKuMiN**

コクミン



We are a drugstore offering both a selection of pharmaceuticals, cosmetics, and goods for daily life as well as a particularly extensive selection of products from popular brands like Shiseido and SK II.

Location: Namba CITY Main Building 2F

COU PON 8% discount if passport is shown (excludes some products)

**UNIQLO**

ユニクロ



There is a wide range of high quality and fashionable clothes for men, women and kids, no matter when you wear, who you are or where you live. Please enjoy your shopping in the spacious and bright store.

Location: Namba CITY South Building B1F

**CAMERA no KITAMURA**

カメラのキタムラ



We have many cameras from famous manufacturers like Canon and Nikon. Our selection provides a full range of compact digital cameras, popular mirrorless single-lens cameras, video cameras, used cameras, camera accessories, and more. We also offer digital camera prints done in as little as 10 minutes.

Location: Namba CITY South Building B1F





**MUJI**

無印良品



We offer a wide variety of basic household items that last a long time and never go out of style. The simple miscellaneous goods regardless of gender can also be used in business. Snacks sold from 108yen are just good when you feel a bit hungry. You are offered safer food at a more reasonable price under MUJI's careful planning and management process.

Location: Namba CITY South Building 1F

**Ciaopanic**

チャオパニック



We offer highly fashion-sensible casual apparel from Japan and overseas, primarily original men's and women's basic and jean-style based goods, to provide a stylish urban lifestyle to the city.

Location: Namba CITY South Building 1F



**Nankai Electric Railway start services for Muslim (Islam) users!**

**1. For the prayer room**

Location : NAMBA CITY main building 1st basement

Facilities : separated by gender, washing space

Capacity : 5 men / 3 women

Opening hours : 11:30AM~8:30PM (last admission 8:00PM)

※closed day is same as NAMBA CITY



**2. Pork-free & Alcohol-free**

Available restaurants: Restaurants of NAMBA CITY and NAMBA PARKS

(※For details of available restaurant, you can check it on our WEB site "How to enjoy Osaka" below.)

<http://www.howto-osaka.com>



**TAX FREE**



NAMBA CITY GIRL



**Japan. Tax-free Shop**

This symbol is the mark.



Main Building	2F	Samantha Thavasa Petit Choice+	Fashion Goods
Main Building	1F	STRAWBERRY-FIELDS	Ladies' Fashion
Main Building	1F	aquagirl	Ladies' Fashion
Main Building	1F	Jewel Changes	Ladies' Fashion
Main Building	1F	Liesse	Ladies' Fashion
Main Building	1F	Stylish Gallery PROFILE	Ladies' Fashion
Main Building	1F	DIANA	Shoes, Bags
Main Building	1F	ANTEPRIMA / MISTO	Bags
Main Building	1F	MAYSON GREY	Ladies' Fashion
Main Building	1F	Swingle	Ladies' Fashion
Main Building	1F	PEACH JOHN THE STORE	Underwear, Fashion Goods
Main Building	B1F	KATE SPADE SATURDAY	Ladies' & Fashion Goods
Main Building	B1F	PAR ICI	Ladies' Fashion
Main Building	B1F	WALL	Men's, Ladies' Fashion, Goods

**Conditions for tax-free shopping: You must present your passport when making a purchase.**

(1) Consumables (foods, drinks, medicines, cosmetics, etc.) must be purchased at the same store on the same day, and the total spending must be over 5,000yen but no greater than 500,000yen.

(2) General goods (electric appliances, clothing, accessories, etc.) EXCEPT FOR consumables are exempt from consumption tax if purchased at the same store on the same day, and the total spending must be over 10,000yen.



Main Building	B1F	Coquelicot	Ladies' Fashion
Main Building	B1F	KATHARINE ROSS	Ladies' Fashion
Main Building	B1F	Loungedress	Ladies' Fashion
Main Building	B1F	BEAUTY & YOUTH UNITED ARROWS	Men's, Ladies' Fashion
Main Building	B1F	mystic	Ladies' Fashion
Main Building	B1F	Té chichi	Ladies' Fashion
Main Building	B1F	Lui' s/EX/store	Men's, Ladies' Fashion
Main Building	B1F	Adam et Rope'	Men's, Ladies' Fashion
Main Building	B1F	RANDA	Ladies' Fashion & Shoes
Main Building	B1F	MISUGI	Cosmetics
Main Building	B2F	bulle de savon	Ladies' Fashion
Main Building	B2F	Unpeu Femme	Ladies' Fashion
Main Building	B2F	H.A.K / SUPER HAKKA	Ladies' Fashion
Main Building	B2F	MAJESTIC LEGON	Ladies' Fashion
Main Building	B2F	E hyphen world gallery	Ladies' Fashion
Main Building	B2F	ASAHIYA BOOK STORE	Books
Main Building	B2F	MEN' S MELROSE	Men's Fashion
Main Building	B2F	Lui' s	Men's Fashion
Main Building	B2F	ils	Bags
Main Building	B2F	ichée by UNO-PALLAZO	Men's Fashion
Main Building	B2F	COTERIE	Ladies' Fashion
Main Building	B2F	Crisp	Ladies' Fashion
Main Building	B2F	ABC-MART	Shoes
Main Building	B2F	MEGANE no TANAKA	Eyewear
Main Building	B2F	STYLE DEE.	Stationary
South Building	2F	ROCK INN	Musical instrumentan instrument
South Building	2F	3COINS	Kitchen, Interior Goods
South Building	1F	Vie ému	Ladies' Fashion
South Building	1F	Kastane	Ladies' Fashion
South Building	1F	Who' s Who Chico	Ladies' Fashion
South Building	1F	Ciaopanic	Men's, Ladies' Fashion
South Building	1F	Sodalite	Ladies' Fashion
South Building	1F	WHO' S WHO gallery	Men's, Ladies' Fashion
South Building	1F	Sharero	Ladies' Fashion
South Building	1F	Par Avion	Ladies' Fashion
South Building	B1F	CAMERA no KITAMURA	Camera / Photo
South Building	B1F	MURASAKI Sports	Sports Goods

### Conditions for tax-free shopping: You must present your passport when making a purchase.

(1) Consumables (foods, drinks, medicines, cosmetics, etc.) must be purchased at the same store on the same day, and the total spending must be over 5,000yen but no greater than 500,000yen.

(2) General goods (electric appliances, clothing, accessories, etc.) EXCEPT FOR consumables are exempt from consumption tax if purchased at the same store on the same day, and the total spending must be over 10,000yen.

## ACCESS MAP

The Nankai Electric Railway provides convenient access to not just Kansai Airport, but also Kyoto, Kobe, Nara, and Wakayama!



Discount tickets for travel to these areas can be purchased online. See the reverse side for details.