

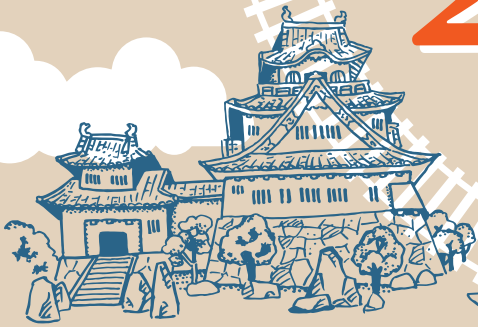
# JAPAN

## Osaka Wakayama



Enjoy Osaka and Wakayama  
to your heart's content!

# NANKAI All Line 2day Pass



## NANKAI ALL LINE 2day Pass

Price

●Purchase in advance  
on official site

¥2,000 (Adult only)

●Purchase in Japan

¥2,100 (Adult only)

Where  
to buy

●Online

<https://www.howto-osaka.com/en/ticket/web-nankaiallline2daypass/>

Where to  
exchange  
the E ticket

Nankai Electric Railway Kansai Airport Station ticket office/information, Nankai Namba Station (service counter on the second floor/ticket counter on the third floor), Shin-Imamiya Station, Tengachaya Station

●To buy at a station

Ticket office at some Nankai Electric Railway stations. To find out more, visit our website.

Validity

If you exchange the ticket between January 1 and March 31, you can use the ticket for any two days until April 30 of the same year. If you exchange the ticket between April 1 and December 31, you can use the ticket for any two days until April 30 of the following year.



Click here  
to read  
more

•Once you start using the ticket you will not be able to get a refund even if trains are cancelled or for any other reason.  
•You will be required to pay an additional fee if you use a train with reserved seating.

 NANKAI



# Model Course to visit from Osaka

Let's Start!



World heritage  
Koyasan Kudoyama course



Kada/Wakayamashi course

- 8:00 ● **Namba Station**  
90min
- 9:30 ● **Kōyasan Station**  
10min
- 9:40 ● **The House of Tokugawa Mausoleum**  
10min
- 10:30 ● **Oku-no-in or Danjo Garan, Kongobuji Temple**
- 12:00 ● **Lunch**
- 13:20 ● **Kōyasan Station**  
40min
- 14:00 ● **Kudoyama Station**  
10min
- 14:10 ● **Sanada-an**
- 14:30 ● **Kudoyama Sanada Museum**  
20min
- 15:30 ● **Jison-in**  
30min
- 16:40 ● **Kudoyama Station**  
80min
- 18:00 ● **Namba Station**  
Shin-Imamiya Station  
Tengachaya Station



If you feel hungry visit the popular rice ball stand "Kudo"



Learn about famous warlords at the Kudoyama Sanada Museum



Awashima Shrine houses countless dolls from all over Japan!



Look for the "Hospitable Ninja" at Wakayama Castle



- Namba Station ● 9:00  
Shin-Imamiya Station  
Tengachaya Station  
60min
- Wakayamashi Station ● 10:00  
30min
- Kada Station ● 10:30  
20min
- Awashima Shrine ● 11:10  
Lunch  
(Red sea bream dishes) around Kada  
20min
- Kada Station ● 13:30  
20min
- Wakayamashi Station ● 14:00  
10min
- Wakayama Castle ● 14:10  
30min
- Kuroshio Market ● 15:40  
40min
- Wakayamashi Station ● 17:30  
60min
- Namba Station ● 18:30  
Shin-Imamiya Station  
Tengachaya Station

