



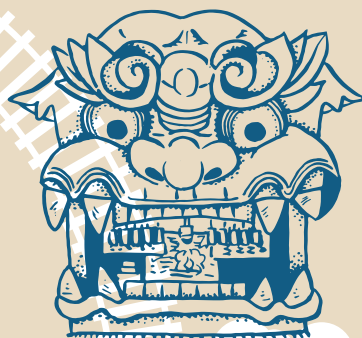
JAPAN

Osaka Wakayama



Enjoy Osaka and Wakayama
to your heart's content!

NANKAI All Line 2day Pass



NANKAI ALL LINE 2day Pass

Price

- Purchase in advance on official site

¥2,600 (Adult only)

- Purchase in Japan

¥2,700 (Adult only)

Where to buy

- Online

<https://www.howto-osaka.com/en/ticket/web-nankaiallline2daypass/>

Where to exchange the E ticket

Nankai Electric Railway Kansai Airport Station ticket office/information, Nankai Namba Station (service counter on the second floor/ticket counter on the third floor), Shin-Imamiya Station, Tengachaya Station

- To buy at a station

Ticket office at some Nankai Electric Railway stations. To find out more, visit our website.

Validity

If you exchange the ticket between January 1 and March 31, you can use the ticket for any two days until April 30 of the same year. If you exchange the ticket between April 1 and December 31, you can use the ticket for any two days until April 30 of the following year.



Click here to read more

• Once you start using the ticket you will not be able to get a refund even if trains are cancelled or for any other reason.
• You will be required to pay an additional fee if you use a train with reserved seating.

 **NANKAI**

Model course to visit from Osaka

Let's Start!



World heritage Koyasan Kudoyama course

- 8:00 ● Namba Station
90min
- 9:30 ● Kōyasan Station
10min
- 9:40 ● The House of Tokugawa Mausoleum
10min
- 10:30 ● Oku-no-in or Danjo Garan, Kongobuji Temple
- 12:00 ● Lunch
- 13:20 ● Kōyasan Station
40min
- 14:00 ● Kudoyama Station
10min
- 14:10 ● Sanada-an
- 14:30 ● Kudoyama Sanada Museum
20min
- 15:30 ● Jison-in
30min
- 16:40 ● Kudoyama Station
80min
- 18:00 ● Namba Station
Shin-Imamiya Station
Tengachaya Station



If you feel hungry visit the popular rice ball stand "Kudo"



Learn about famous warlords at the Kudoyama Sanada Museum



Kada/Wakayamashi course

Awashima Shrine houses countless dolls from all over Japan!



Look for the "Hospitable Ninja" at Wakayama Castle



- Namba Station
Shin-Imamiya Station
Tengachaya Station
60min
- 9:00
- Wakayamashi Station
30min
- 10:00
- Kada Station
20min
- 10:30
- Awashima Shrine
Lunch
(Red sea bream dishes) around Kada
20min
- 11:10
- Kada Station
20min
- 13:30
- Wakayamashi Station
10min
- 14:00
- Wakayama Castle
30min
- 14:10
- Kuroshio Market
40min
- 15:40
- Wakayamashi Station
60min
- 17:30
- Namba Station
Shin-Imamiya Station
Tengachaya Station
- 18:30