



# めでたいでんしゃ

medetai train

Let's go to much-valued Kada,  
taking the Medetai Train!



Taking happy feelings  
and everyone's smile along,  
All aboard!

和歌山市-加太  
 WAKAYAMASHI KADA



I will go on a journey  
 to find happiness!



めでたいでんしゃ  
 medetai train

Kada's representative seafood, "Tai" (sea bream) has become a train swimming on the railroad.

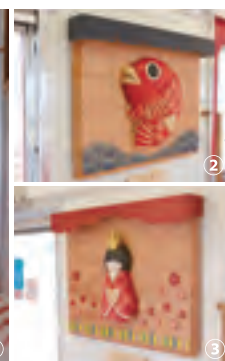
As well as the exterior, there are abundant elements to cheer you up all over the train!

Once you board the Medetai Train, your journey for Kada,  
 where you can encounter happy and adorable things, will begin.

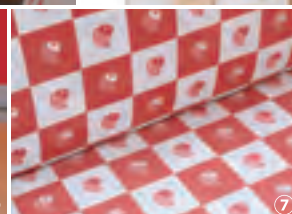


\ Admire the scenery! Enjoy the ride! /

////////// We'll show you what the Medetai Train is like. //////////



Touch them and  
 you may get lucky!



①The train features a light and relaxed atmosphere and many sea bream.②③Lucky charms, symbolizing the Tai of Kada and the Hina dolls of Awashima Shrine. (The Medetai of Kada / The Musubina of Kada) ※ An invocation given by Awashima Shrine.④ Fish-shaped wooden straps ⑤ A roll-up curtain reflecting the image of a fishing net. Let's catch sea bream swimming by the window.⑥ The wood-grain floor, featuring a warm and friendly atmosphere and fish welcoming you at the door.⑦ Original seat designs, garnished with sea bream motifs and in three variations.







So many places  
that I want to show  
everybody!



I want to see, eat and be comforted!

## || KADA STROLLING MAP ||

Happy must-visit sites in town, seafood, local specialty dishes  
and a hot spring where you can fully relax, physically and mentally.  
Take time and enjoy everything to the max!

Let's go to the  
best spot!



### Nice spots for sightseeing!

#### 1 Awashima Shrine

Awashima Shrine has long been venerated as the God of women for marriage, recovery from feminine problems and prayers for safe childbirth, etc. Check out Koi mikuji (paper fortune for love) and Goshuin (commemorative stamps obtained at a shrine), featuring a hina doll married couple design!

⟨Access⟩ Get off at Kada Station and approx. 20 min on foot.

#### 2 Kada Kasuga Shrine

The shrine pavilions, featuring a Japanese architectural style known as Momoyama, are stately, reflecting how they were designated as national treasures prior to World War II. Please try sea bream-shaped Omikuji (paper fortune) commemorating your visit.

⟨Access⟩ Get off at Kada Station and approx. 8 min on foot.

### I want to be comforted!

#### Kada Beach

Blue ocean and a beautiful beach with smooth and dry sand. You can also look across to Tomogashima from here. Watching the sunset over the ocean, while listening to the sound of the gentle waves, is also recommended.

⟨Access⟩ Get off at Kada Station and approx. 15 min on foot.

#### Kada Awashima Onsen (Hot spring)

Kada has abundant hot springs with sodium bicarbonate water, making the water is thick and effectively softening and smoothing your skin. Good for women.

※ The photo shows the Seaside Hotel Kadakaigetsu, Wakayama Kada Onsen

### Enjoy dining!

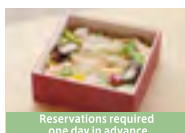


#### a Osakaya Hiinanoyu

"Kada Tai Donburi ~Rejuvenation~"  
¥1,620 (Including tax)

hr. 11:00 a.m. - 2:00 p.m.

no. No scheduled ☎ 073-459-1151



#### b Fresh fish cuisine Inasa

"Madai-chirashizushi"  
¥1,620 (including tax)

hr. 11:00 a.m. - 9:00 p.m.

no. Every Tuesday ☎ 073-459-0118



#### c Aburinoyu Pension Fujiya

"Tai-no-yukkedon"  
¥1,200 (including tax)

hr. 10:00 a.m. - 8:00 p.m.

no. No scheduled ☎ 073-459-1500



#### d Kojima Hajime Store

"Yomogi Daifuku"  
¥600/5 pieces (including tax)

hr. 7:00 a.m. - 6:00 p.m.

no. ☎ 073-459-0336

## How to get to Kada

### [Access]

#### By Shinkansen

##### Shin-Osaka

Subway  
Midosuji Line  
<Approx. 15 min>

##### Namba (Nankai)

Nankai Electric Railway  
Limited Express "Southern"  
(with some reserved-seats)  
<Approx. 60 min>

#### By Airplane

##### Kansai International Airport

Nankai Electric Railway  
Limited Express "Rapi:t"  
<Approx. 10 min>  
Airport Express  
<Approx. 10 min>

##### Izumisano

Nankai Electric Railway  
Limited Express "Southern"  
(with some reserved-seats)  
<Approx. 30 min>

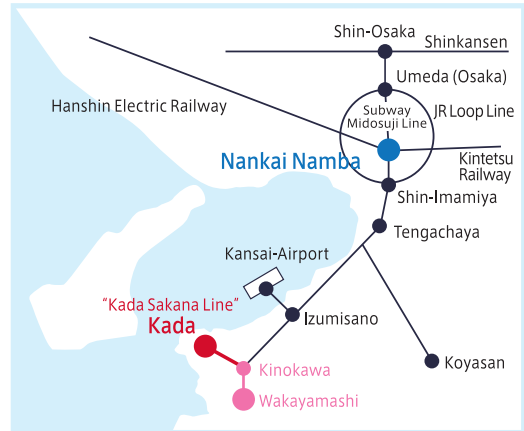
#### Wakayamashi

Change to a local train bound for Kada!  
<Approx. 25 min>

#### Kada

- ※ One-way fare between Namba and Kada: Adults ¥960 / Children ¥480
- ※ One-way fare between Kansai-Airport and Kada: Adults ¥970 / Children ¥490
- ※ When reserving a seat on a Limited Express train, Rapi:t or Southern, you need to pay extra for the seat.
- ※ Please check detailed information such as the timetable in advance.
- ※ The required time is shown only as a guide and excludes the time required to change trains.

### [Wide Area Map]



### [Kada Sakana Line Route Map]



- ※ The Kada Sakana Line, which is the nickname for the Kada line on the Nankai Electric Railway between Kinokawa and Kada Stations.

## Medetai Train Timetable for weekends and public holidays

Departing from Wakayamashi Station	8:51	9:55	10:55	11:55	16:15	17:17	18:26
Departing from Kada Station	9:24	10:27	11:27	12:27	16:43	17:46	18:56

- ※ The schedule is subject to change.
- ※ On weekdays, the Medetai Train is not operated on a regular basis. Please visit the Medetai Train special website for details.

## Kada Sakana Line original goods on sale!

Please obtain as a souvenir  
when boarding  
the Medetai Train!

Point of Sale

### Kada Station

Namba Station, 2F Service Center



Plastic folder  
¥500 (including tax)



Cotton gauze towel  
¥700 (including tax)